

State of Wyoming Corner Record

(In compliance with the *CORNER PERPETUATION AND FILING ACT*, Wyoming Statutes, 1997 Section 33-29-140 et. se., and the Rules and Regulations of the Board of Professional Engineers and Professional Land Surveyors)

Reverse side of this form may be used if more space is needed.

Record of original survey and citation of source of historical information (if corner is lost or obliterated). Description of corner monumentation evidence found and/or monument and accessories established to perpetuate the location of this corner. Sketch of relative location of monument, accessories, and reference points with course and distance to adjacent corner(s) (if determined in this survey). Method and rationale for re-establishment of lost or obliterated corner.

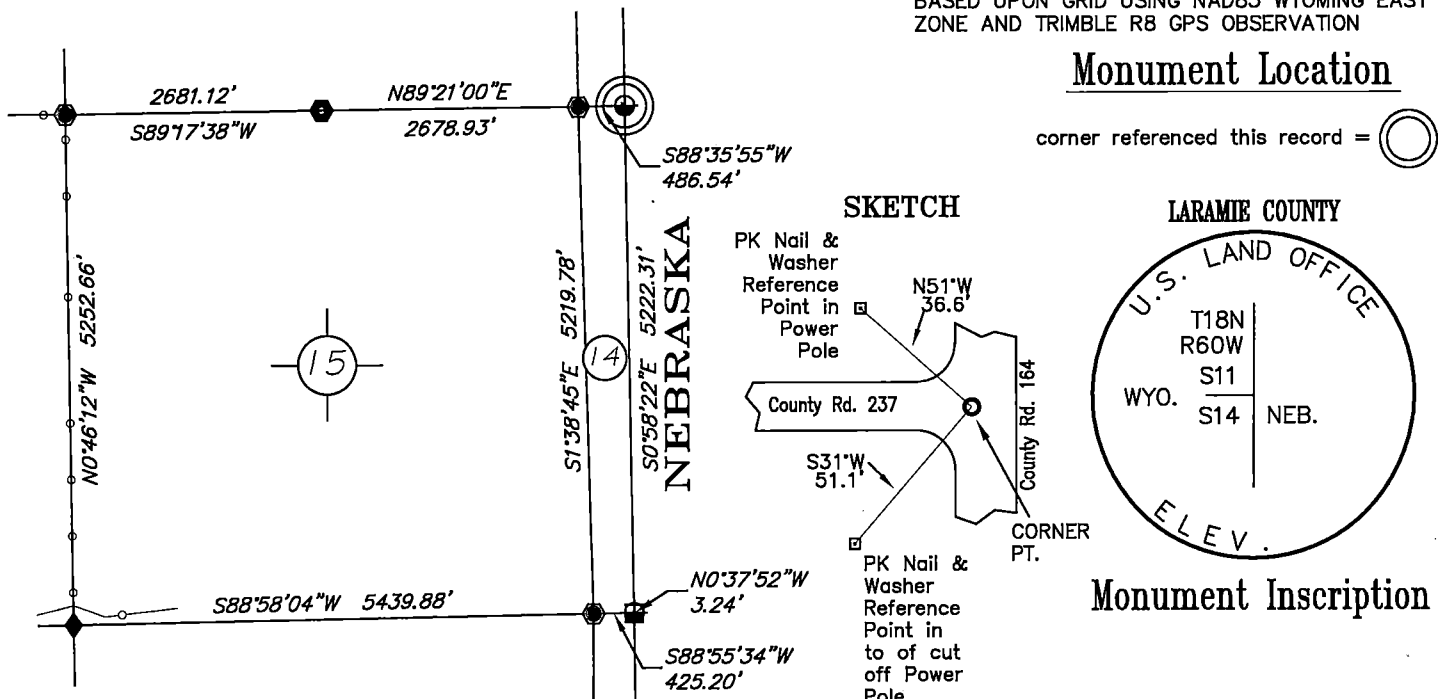
RECORD: U.S. LAND OFFICE survey by Edward F. Stahle from May to June 1908
 "79.24 chs; a closing cor. of secs. 14 and 23, a trace of mound, on true line I set iron post 3ft. long, 2.75 ins. dia., 26 ins. in the ground, surmounted by brass cap, marked T.18 N., R. 60 W., S.11 on N.W.; S.14 on S.W.; WYO on W.; NEB on E." Monument was buried for county road by Nebraska Banner County Surveyor in May 1937.

FOUND: 3.2 inch brass cap on 2.75 inch iron post, cap is 24 inches below surface of state line county gravel road.

Re-monumentation: set PK nail and washers for reference points as shown in sketch.

	Point #	North	East	Elev.
NAD83, position:	1860142	378733.23	961191.49	5300.87

NOTE:
 BEARINGS AND DISTANCES SHOWN HEREON ARE BASED UPON GRID USING NAD83 WYOMING EAST ZONE AND TRIMBLE R8 GPS OBSERVATION



Date of Field Work: May 30 & July 27, 2019 Office Reference: DRG-21897, Pt.1860142

Cross Index Plat

1	2	3	4	5	6	7	8	9	10	11	12	13	14	15	16	17	18	19	20	21	22	23	24	25	
A	+	+	+	+	+	+	+	+	+	+	+	+	+	+	+	+	+	+	+	+	+	+	+	+	
B	6	5	4	3	2	1																			
C	+	+	+	+	+	+	+	+	+	+	+	+	+	+	+	+	+	+	+	+	+	+	+	+	
D	+	+	+	+	+	+	+	+	+	+	+	+	+	+	+	+	+	+	+	+	+	+	+	+	
E	+	+	+	+	+	+	+	+	+	+	+	+	+	+	+	+	+	+	+	+	+	+	+	+	
F	+	+	+	+	+	+	+	+	+	+	+	+	+	+	+	+	+	+	+	+	+	+	+	+	
G	7	8	9	10	11	12																			
H	+	+	+	+	+	+	+	+	+	+	+	+	+	+	+	+	+	+	+	+	+	+	+	+	
J	+	+	+	+	+	+	+	+	+	+	+	+	+	+	+	+	+	+	+	+	+	+	+	+	
K	+	+	+	+	+	+	+	+	+	+	+	+	+	+	+	+	+	+	+	+	+	+	+	+	
L	18	17	16	15	14	13																			
M	+	+	+	+	+	+	+	+	+	+	+	+	+	+	+	+	+	+	+	+	+	+	+	+	
N	+	+	+	+	+	+	+	+	+	+	+	+	+	+	+	+	+	+	+	+	+	+	+	+	
O	+	+	+	+	+	+	+	+	+	+	+	+	+	+	+	+	+	+	+	+	+	+	+	+	
P	19	20	21	22	23	24																			
Q	+	+	+	+	+	+	+	+	+	+	+	+	+	+	+	+	+	+	+	+	+	+	+	+	
R	+	+	+	+	+	+	+	+	+	+	+	+	+	+	+	+	+	+	+	+	+	+	+	+	
S	+	+	+	+	+	+	+	+	+	+	+	+	+	+	+	+	+	+	+	+	+	+	+	+	
T	30	29	28	27	26	25																			
U	+	+	+	+	+	+	+	+	+	+	+	+	+	+	+	+	+	+	+	+	+	+	+	+	
V	+	+	+	+	+	+	+	+	+	+	+	+	+	+	+	+	+	+	+	+	+	+	+	+	
W	+	+	+	+	+	+	+	+	+	+	+	+	+	+	+	+	+	+	+	+	+	+	+	+	
X	31	32	33	34	35	36																			
Y	+	+	+	+	+	+	+	+	+	+	+	+	+	+	+	+	+	+	+	+	+	+	+	+	
Z	1	2	3	4	5	6	7	8	9	10	11	12	13	14	15	16	17	18	19	20	21	22	23	24	25

Firm/Agency, Address
 this corner record provided by:
HAMILTON LAND SURVEYING
 UNDER CONTRACT TO:
DRG RIFFIN & ASSOCIATES, INC.
 1414 ELK ST., SUITE 202
 ROCK SPRINGS, WY 82901
 (307) 362-5028

This corner record was prepared by me or under my direction and supervision.
SEAL & SIGNATURE

Professional Land Surveyor
 CHRIS D. HAMILTON
 5297
 Date: 8/31/2019
 WYOMING

RECP #: 761795

RECORDED 9/18/2019 AT 1:44 PM BK# 2638 PG# 1477

Debra K. Lee, CLERK OF LARAMIE COUNTY, WY PAGE 1 OF 1

Debra Lee _____ Deputy
 County Clerk

STATE of WYOMING, Office of Clerk & Recorder, County of Laramie
 this block provided for county filing documentation

Corner Name: Northeast , Section: 14 , T 18N , R 60W , 6th P.M., Cross-Index No.: J 17-18
 SBRPEPLS/PLSW: March 1994; PLSW January 1998 County: LARAMIE , Wyoming